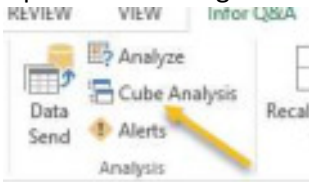


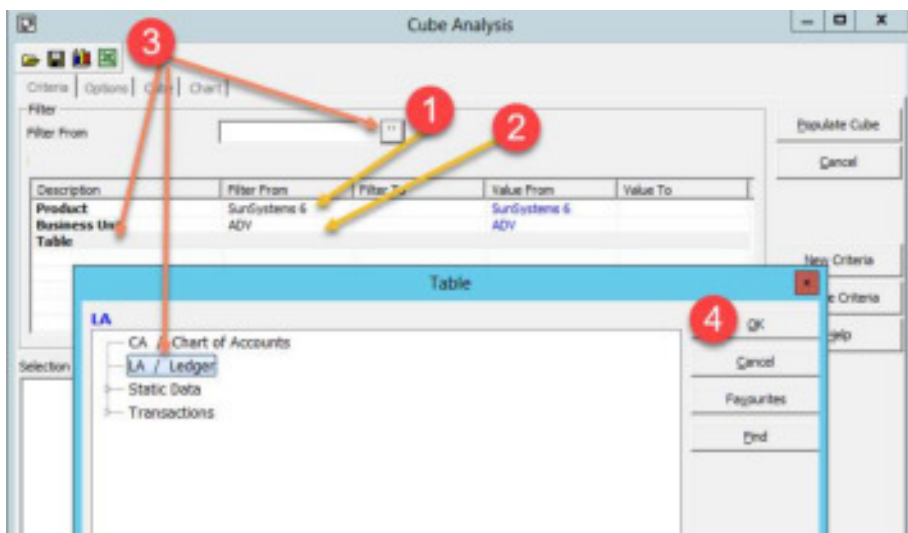
## How to use Cube Analysis in Excel

- Open Excel and log on into Q&A. Locate the option below

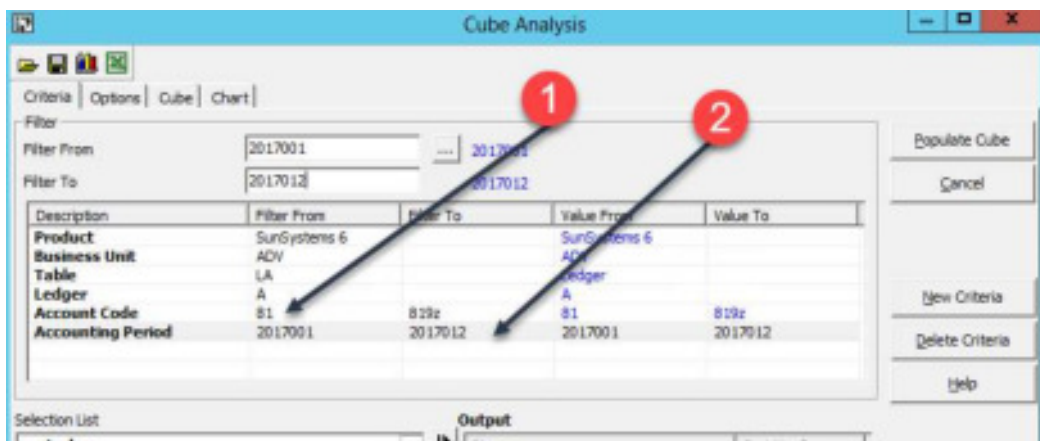


- Follow the steps illustrated out below

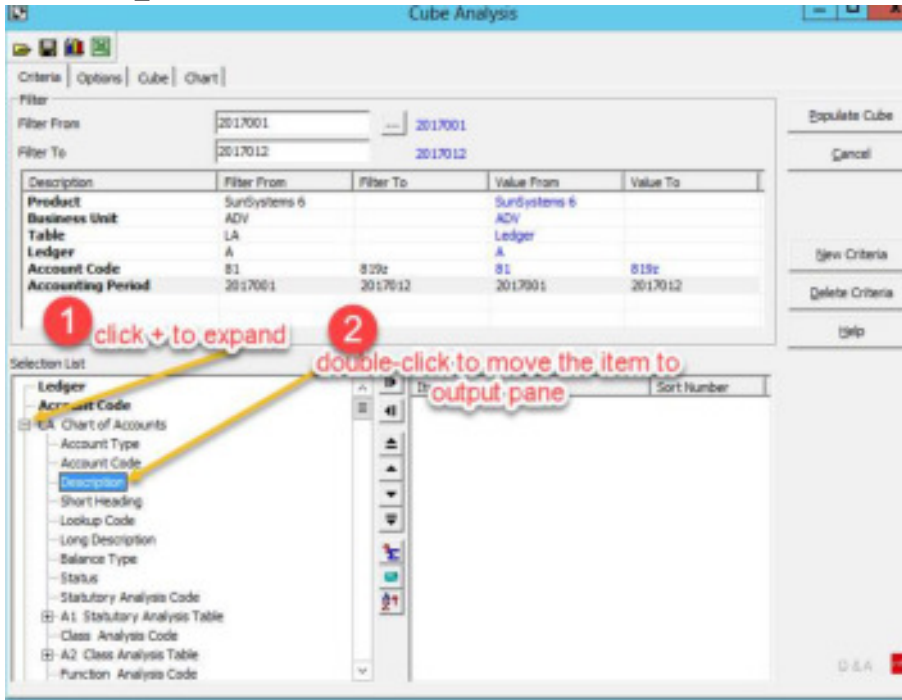
Illustration\_1



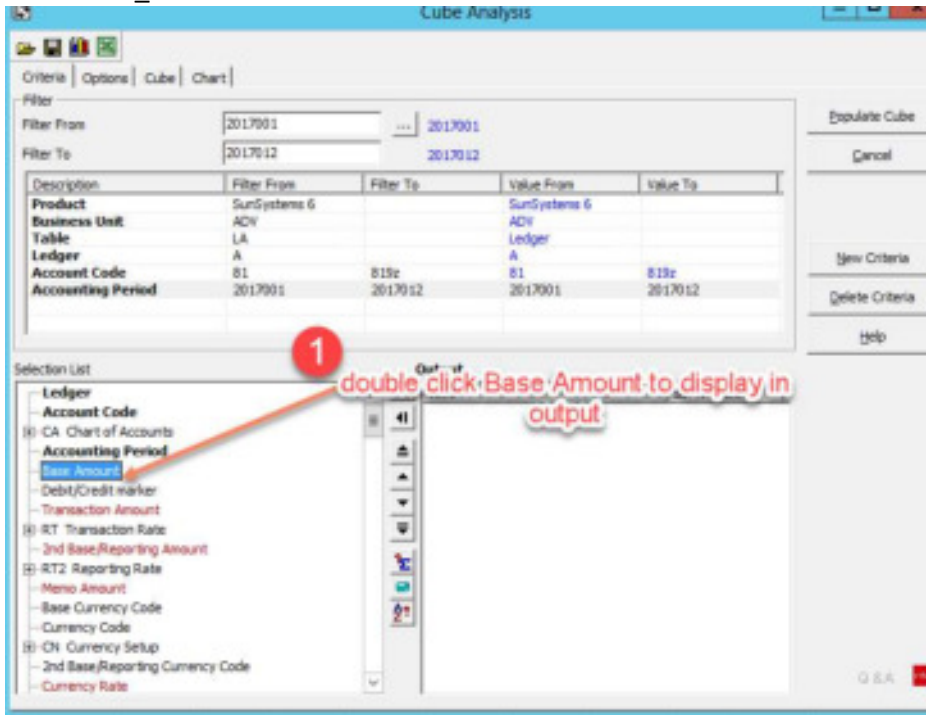
Illustration\_2



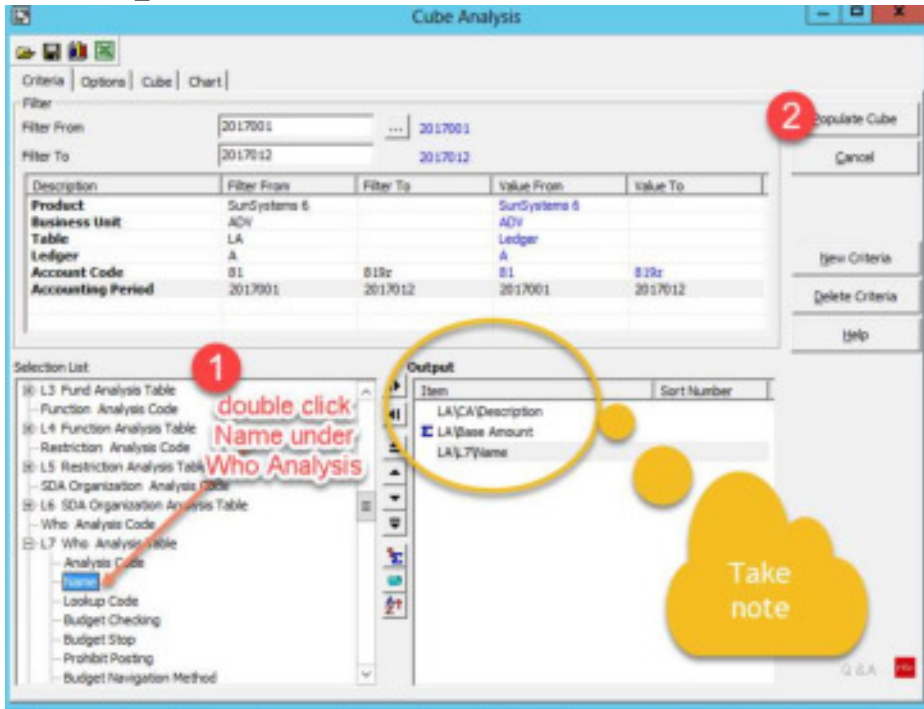
Illustration\_3



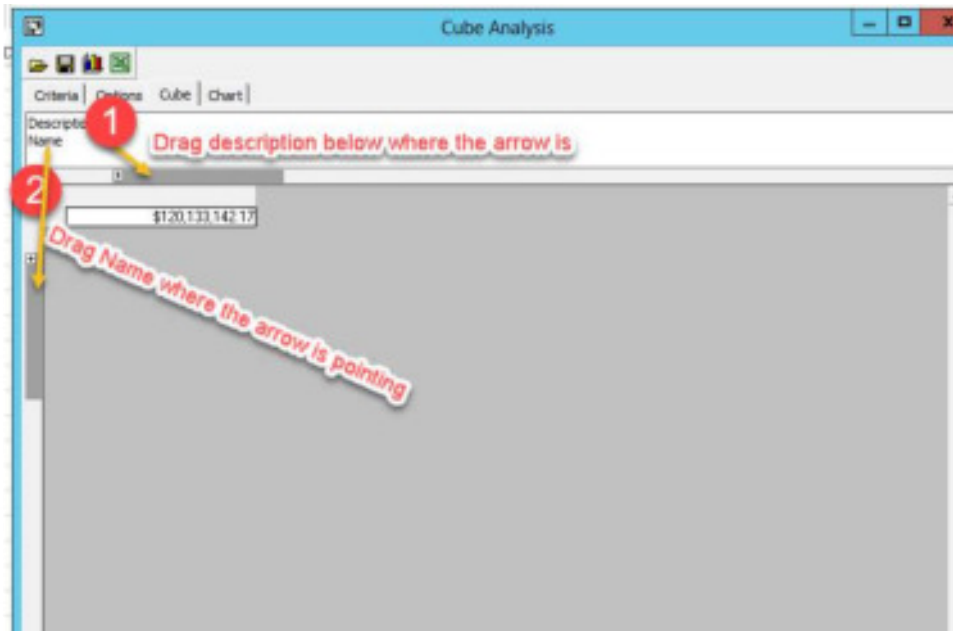
Illustration\_4



Illustration\_5



Illustration\_6



Illustration\_7

The screenshot shows the 'Cube Analysis' application window. At the top, there is a menu bar with 'Criteria', 'Options', 'Cube', and 'Chart'. Below the menu bar, there is a toolbar with several icons. A yellow arrow points to the Excel icon, with a red callout box containing the text 'click excel and give it a file name to save.'. Below the toolbar, there is a large empty rectangular area. A red callout box with the text 'below is the outcome.' points to a table below this area. The table has five columns with headers: 'Book and Equipment Allowance', 'Car Depreciation Allowance', 'Car Insurance & License', 'Education Assistance', and 'Homeowner's Allo'. The rows list names of individuals, such as 'Abuto, Haggai', 'Abuto, Nigh', 'Agbovor, Christine', etc. The table is partially obscured by a vertical scrollbar on the left.

	Book and Equipment Allowance	Car Depreciation Allowance	Car Insurance & License	Education Assistance	Homeowner's Allo
Abuto, Haggai					
Abuto, Nigh					
Agbovor, Christine					
Agwena, Dan					
Ahadiel, Jackson					
Atika, Teresa					
Badegbe, Genet					
Baganbe, William					
Bahati, Prince					
Bahati, Violette					
Baptiste, Philip					
Baranzika, Colette					
Baranzika, Patrice					
Bizirema, Jonathan					
Bizirema, Mary					
Cabellero, Michael					
Cabellero, Elnorie					
Conceicao, Jonathan					
Conceicao, Pitocila					
Coralie, Alain					
Coralie, Caroline					
Hahimana, Euzerine					

- Can close the open excel and re-open the saved file in its path given.
- Omit the Dollar signs. Note that the Dollar sign does not mean that the values are Dollars.
- You can do whatever now in excel to the file.