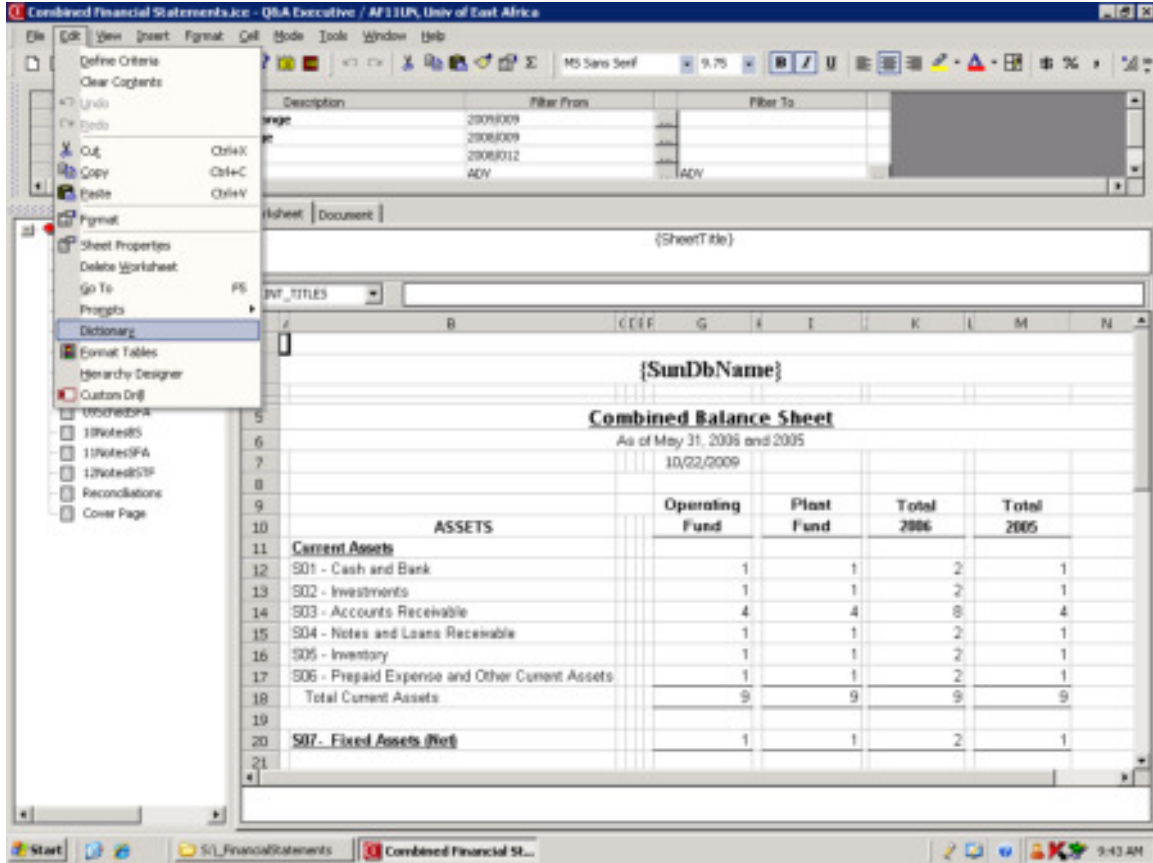


To Correct the error of FS...Dates and name not showing

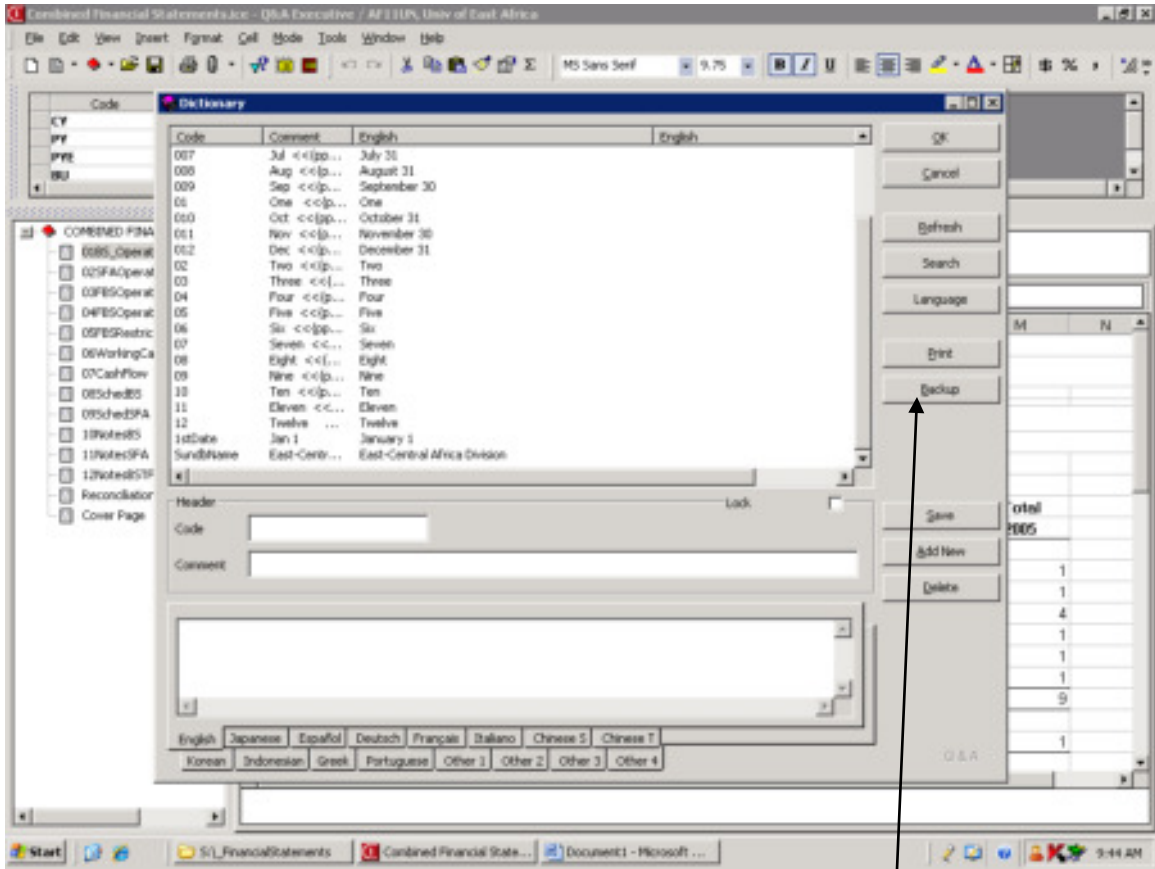
Open the Financial Statement as normally you would. The other file attached named "FYE_1231.DIC" save it on the S drive under FinancialStatement folder.

1 4050 300500



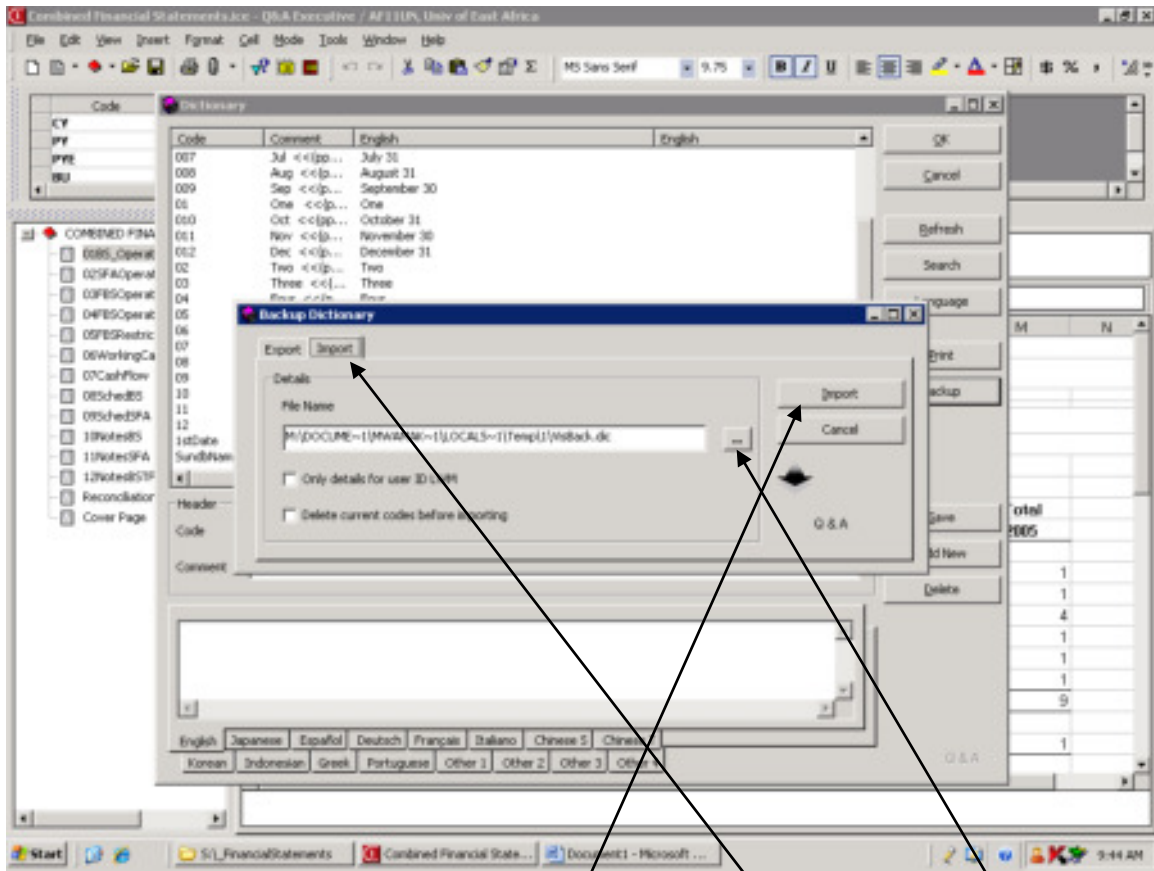
When it has opened, click on **EDIT** on the menu and select **DICTIONARY** as shown above

24050300500



After which a window as above will appear. Click on the button “Backup” and move to the next step.

64050300500



A window as above will appear... Click on the button “Import”. Click on the “assist Button” to browse the file saved in the S drive FinancialStatement folder that was attached to the email “FYE_1231.DIC”. The other buttons will be left as it is blank. So here you should see the file if you have placed it correctly in the S drive FinancialStatement Folder.

After selecting the file “FYE_1231.DIC” you will be back to the same screen as above and you will click “IMPORT”. A message will appear informing you that it has successfully imported. If any question can say Yes to it.

Try running the FS again and see if that produces the right information.