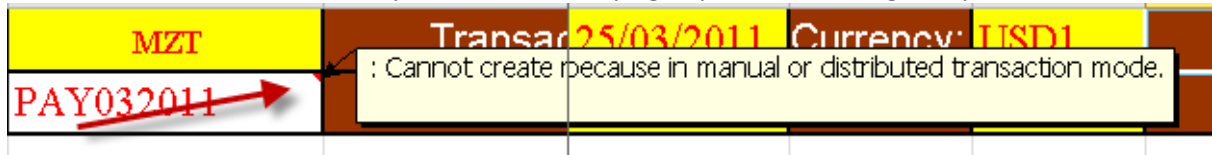


Manual or Distributed Transaction Mode (XL)

This issue happens on Q&A XL Ledger Imports mainly when the following Microsoft Operating Systems get a major Service Pack:

- Windows 7 Service Pack 1
- Windows Server 2008 Service Pack
- Windows Vista Service Pack

Symptom: Here's the error that shows up when a user is trying to process the Ledger Import:



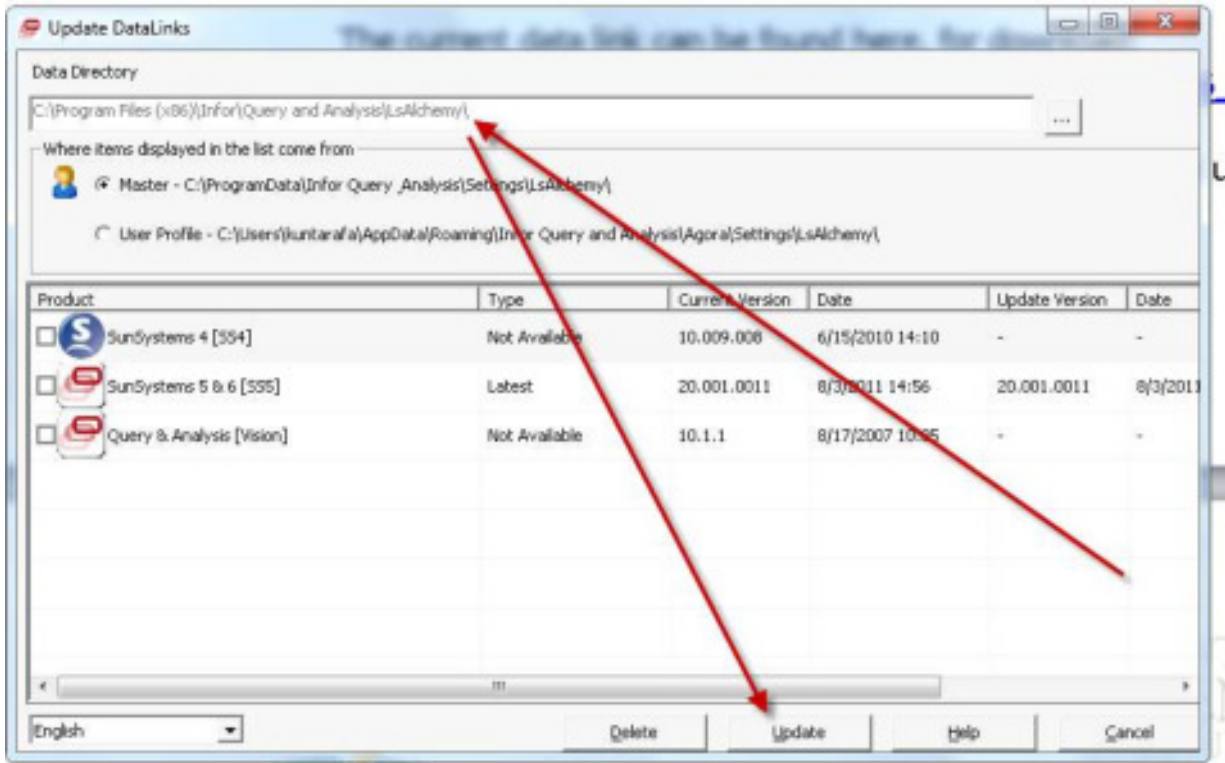
Effect: The updated computers can't process any Ledger Imports (some users end up processing their imports on the server, or their friend's machine – not an ideal workaround!)

Solution: Update the Q&A Datalink to the latest version

The advantage of going with a commercial software company like Infor is that when Microsoft changes, Infor can also change, without the Adventist church having to develop the patch

Please check <http://help.sunplus.adventist.org> for continual updates:

The Q&A Datalink can be updated through the **Update Datalinks** program



- Often it is easiest to unpack the ZIP file and paste the contents in the Data Directory
- And then click “Update”

Unable to Initialize Posting DLL (XL)

This error might occur when:

- Upgrading to Windows 7 or getting a new computer
- After updating the above-mentioned Datalink!

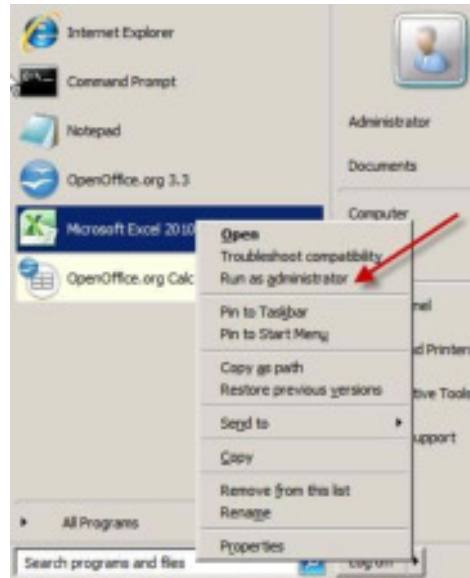
Symptom: Here’s the error that shows up when trying to process the Ledger Import:



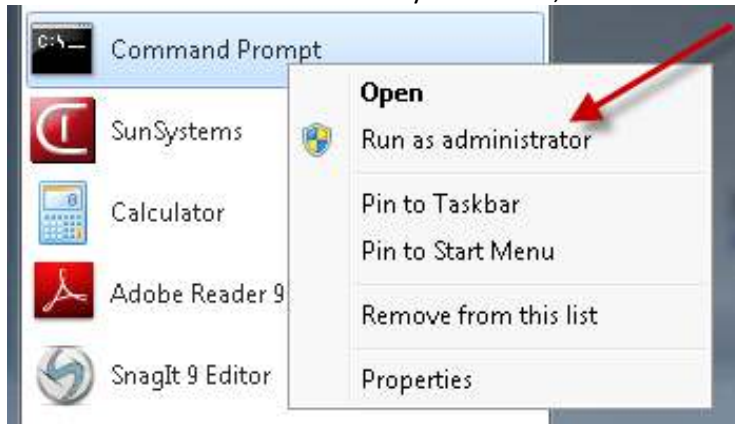
Effect: The updated computers can’t process any Ledger Imports (some users end up processing their imports on the server, or their friend’s machine – not an ideal workaround!).

Solution: Excel needs to be run one “As an Administrator”

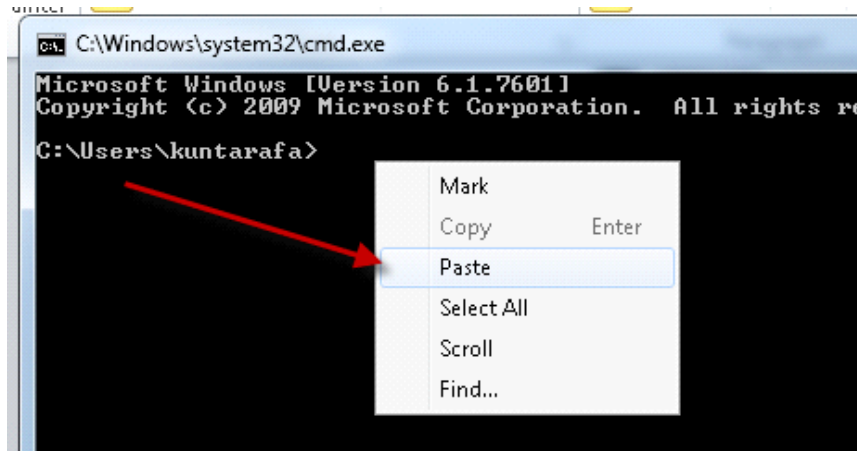
- You might need to “Right-click” on the Excel icon and click “Run As Administrator”



- Sometimes this doesn't work and you need to, From an elevated command prompt, Run:



Type or Copy and Paste (right-click and Paste into the "DOS" window)



`regsvr32 C:\ProgramData\Lasata\SS5_LedgerImport_103\SS5_LedgerImport_103.dll`

Final note: the latest Datalink will come up with this alarming error:



No alarm, just click Yes and the Ledger Import will be processed